



**Standardizing
Health Care
Facility
Nomenclature**

Status Update
January 23, 2021

Health Care Facility Nomenclature

What is being standardized?

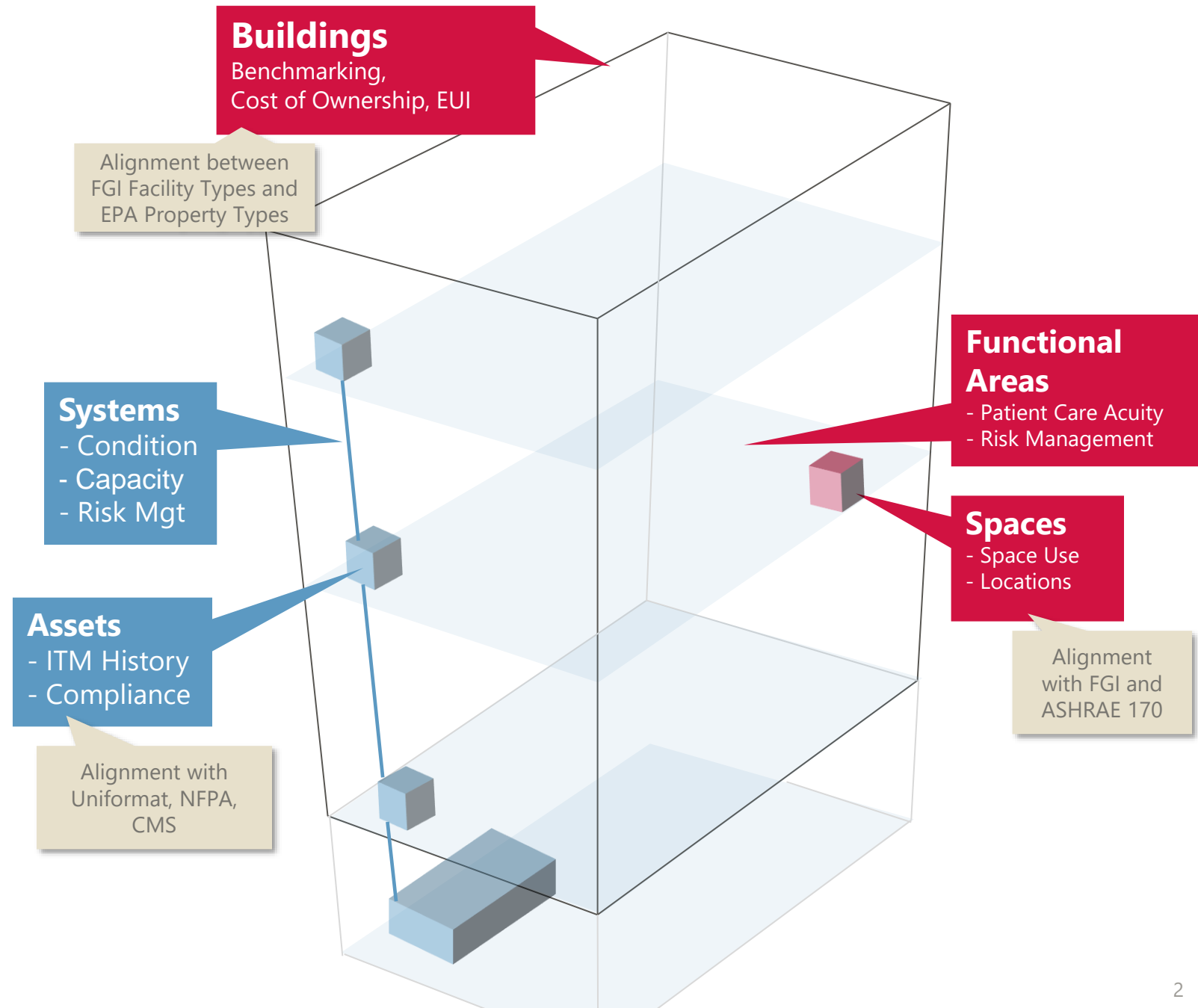
Classification for buildings and their functional elements.

- Use of recognized industry standards.
- Alignment with regulatory frameworks governing healthcare facilities management.

Why?

Provide planners, designers, and operators with a common nomenclature.

- Simplify the maintenance of reliable building master records.
- Simplify and streamline health care facility risk management.
- Increase compliance with regulatory requirements.
- Support benchmarking/increase visibility into total cost of ownership.



Background

- The Health Care Facility Nomenclature effort started as a grassroots initiative by several health care facility management organizations to standardize the classification of buildings, building systems and spaces.
- A first draft of the classification standards was published in January 2021 by the American Society for Healthcare Engineering (ASHE) and the Facility Guidelines Institute (FGI).

- Categorization schemas aligned with the FGI 2018 Guidelines for Design and Construction of Hospitals

- 1) Categorization of Buildings**
- 2) Categorization of Functional Areas**
- 3) Categorization of Spaces**

These three classification schemas are draft versions that have been submitted for consideration to the Steering Committee of the FGI Health Guidelines Revision Committee (HGRC). A final version will be published in 2021 once the review of the Steering Committee is complete.

- Categorization schemas aligned with UniFormat©, adjusted by ASHE for health care facility engineering

- 4) Categorization of Building Systems**
- 5) Categorization of Assets**

These classification schemas are draft versions that have been submitted for consideration to the Operational Excellence Committee of ASHE. A final version will be published in 2021 once the review of the Operational Excellence Committee is complete."

INFRASTRUCTURE



Quantifying excellence for health care facilities

Data standardization project at Yale New Haven Health builds a foundation for better operations

This article describes the genesis of the data standards

<https://www.hfmmagazine.com/articles/4032-quantifying-excellence-for-health-care-facilities>

The 5 Health Care Facility Management Nomenclatures/Classifications

Benefits of Standardization

Buildings

Standardized list of health care building types.
With clarified measurement of Gross and Net Square Footages.

Building Systems

Standardized list of functional elements needed to operate a health care facility.

Building System Assets

Standardized list of maintainable equipment used in health care facilities engineering.

Functional Areas

Standardized list of functional units needed in the delivery of health care.

Spaces

Standardized list of spaces (rooms, areas) found in a health care facility.

Strategic

Increased reliability of real estate portfolio register
Increased reliability of benchmarking data

Increased quality of infrastructure condition, risk and resiliency assessments.

Improved alignment between clinical service delivery and facilities.

Increase Efficiency of Maintenance & Operations Function

- Improve quality and impact of engineering asset register and the inspection, testing and maintenance program
- Support informed capital investments, to increase reliability of critical infrastructure and reduce operating cost

Optimization of Space Management Function

- Optimize space utilization, service delivery, clinical planning and billing

Operational

Classification of Buildings

Aligned with

- **EPA Property Types**

- Alignment with EPA Portfolio Manager

- Alignment with ASHE Energy-to-Care Benchmarking

- **FGI Facility Types**

FGI Facility Type	EPA Portfolio Manager Property Types		EPA Property Types, expanded with FGI Facility Types	
FGI Facility Type	EPA Property Types Level 1	EPA Property Types Level 2	Proposed Healthcare Building Portfolio Lookup	Also known as:
H-2.2 General Hospital	Healthcare	Hospital	Healthcare - Hospital	
H-2.3/OP 2.8 Freestanding Emergency Care Facility	Healthcare	Hospital	Healthcare - Hospital - Freestanding Emergency Care	
H-2.4 Critical Access Hospital	Healthcare	Hospital	Healthcare - Hospital - Critical Access Hospital	
H-2.5 Psychiatric Hospital	Healthcare	Specialty Hospital	Healthcare - Hospital - Psychiatric Hospital	
H-2.6 Rehabilitation Hospital	Healthcare	Specialty Hospital	Healthcare - Hospital - Rehabilitation Hospital	
H-2.7 Children's Hospital	Healthcare	Hospital	Healthcare - Hospital - Children's Hospital	
OP-2.2 General and Specialty Medical Services Facilities				
OP-2.2 Community-based clinic	Healthcare	Urgent Care/Clinic/Other Outpatient	Healthcare - Outpatient - Community-Based Clinic	
OP-2.2 Micro-clinic	Healthcare	Urgent Care/Clinic/Other Outpatient	Healthcare - Outpatient - Micro-Clinic	
OP-2.2 Multi-specialty medical clinic/office building	Healthcare	Medical Office	Healthcare - Medical Office - Multi-Specialty	
OP-2.2 Neighborhood clinic	Healthcare	Urgent Care/Clinic/Other Outpatient	Healthcare - Outpatient - Neighborhood Clinic	
OP-2.2 Physician practice	Healthcare	Medical Office	Healthcare - Medical Office - Physician Practice	
OP-2.2 Primary care center	Healthcare	Medical Office	Healthcare - Medical Office - Primary Care Center	
OP-2.2 Retail clinic	Healthcare	Urgent Care/Clinic/Other Outpatient	Healthcare - Outpatient - Retail Clinic	
OP-2.2 Single-specialty medical clinic/office building	Healthcare	Medical Office	Healthcare - Medical Office - Single-Specialty Medical	
OP-2.2 Sole practitioner clinic	Healthcare	Urgent Care/Clinic/Other Outpatient	Healthcare - Outpatient - Sole Practitioner Clinic	
OP-2.3 Outpatient Imaging Facility	Healthcare	Medical Office	Healthcare - Medical Office - Imaging Facility	
OP-2.4 Birth Center	Healthcare	Urgent Care/Clinic/Other Outpatient	Healthcare - Outpatient - Birth Center	
OP-2.5 Urgent Care Center	Healthcare	Urgent Care/Clinic/Other Outpatient	Healthcare - Outpatient - Urgent Care Center	
OP-2.6 Infusion Center	Healthcare	Medical Office	Healthcare - Medical Office - Infusion Center	
OP-2.7 Outpatient Surgery Facility	Healthcare	Ambulatory Surgical Center	Healthcare - Outpatient - Surgery Facility	
OP-2.9 Endoscopy Facility	Healthcare	Medical Office	Healthcare - Medical Office - Endoscopy Facility	
OP-2.10 Renal Dialysis Center	Healthcare	Medical Office	Healthcare - Medical Office - Renal Dialysis Center	
OP-2.11 Outpatient Psychiatric Center	Healthcare	Medical Office	Healthcare - Medical Office - Psychiatric Center	
OP-2.12 Outpatient Rehabilitation Therapy Facility	Healthcare	Outpatient Rehabilitation/Physical Therapy	Healthcare - Outpatient - Rehabilitation Therapy Facility	
OP-2.14 Dental Facility	Healthcare	Medical Office	Healthcare - Outpatient - Dental Facility	
R-3.1 Nursing Home	Healthcare	Residential Care Facility or Senior Care Facility	Healthcare - Residential Care - Nursing Home	<ul style="list-style-type: none"> Convallescent Home Long-Term Care Rest Homes Retirement Home Memory Care Center Dementia Care Center Skilled Nursing Home
R-3.2 Hospice Facility	Healthcare	Residential Care Facility or Senior Care Facility	Healthcare - Residential Care - Hospice Facility	<ul style="list-style-type: none"> End-of-Life Care Hospice House Elder Hostel Hospice Care Convallescent Home Rest Homes
R-4.1 Assisted Living Facility	Healthcare	Residential Care Facility or Senior Care Facility	Healthcare - Residential Care - Assisted Living Facility	<ul style="list-style-type: none"> Intermediate Care Facility Retirement Community Retirement Home Care Facility Senior Living Facility
R-4.2 Independent Living Settings	Lodging/ Residential	Multifamily Housing	Lodging/Residential - Multifamily Housing - Independent Living	
R-4.3 Substance Abuse Treatment	Healthcare	Residential Care Facility	Healthcare - Residential Care - Substance Abuse Treatment	<ul style="list-style-type: none"> Drug Treatment Facility Alcohol and Drug Recovery Center Drug and Alcohol Rehab Center Chemical Dependency Treatment Center
R-4.4 Developmental Disability Care	Healthcare	Residential Care Facility	Healthcare - Residential Care - Developmental Disability Care	<ul style="list-style-type: none"> Developmental Disability Residential Treatment Center Residential Living for Adults with Intellectual or Developmental Disabilities Residential Treatment Facility Residential Intellectual Disability Facility Residential Care for Disabled
	Banking/Financial Services	Bank Branch	Banking/Financial Services - Bank Branch	
	Banking/Financial Services	Financial Office	Banking/Financial Services - Financial Office	
	Education	Adult Education	Education - Adult Education	
	Education	College/University	Education - College/University	
	Education	K-12 School	Education - K-12 School	
	Education	Other - Education	Education - Other - Education	
	Education	Pre-school/Daycare	Education - Pre-school/Daycare	

Functional Areas and Spaces

FGI Requirements for Nomenclature

1.2-2.1.3 Nomenclature in the Functional Program

1.2-2.1.3.1 The names for spaces and departments used in the functional program shall be consistent with those used in the *Guidelines for Design and Construction of Hospitals*. If acronyms are used, they shall be clearly defined.

1.2-2.1.3.2 The names and spaces indicated in the functional program also shall be consistent with those used on submitted floor plans.

1.2-3 Space Program

A space program shall be provided that contains a list organized by department or other functional unit that shows each room in the proposed project, indicating its size by gross floor area and clear floor area and citing relevant paragraph number(s) from this document.

Classification of Functional Areas

Aligned with the structure of the FGI
 “Guidelines for Design and Construction of Hospitals”

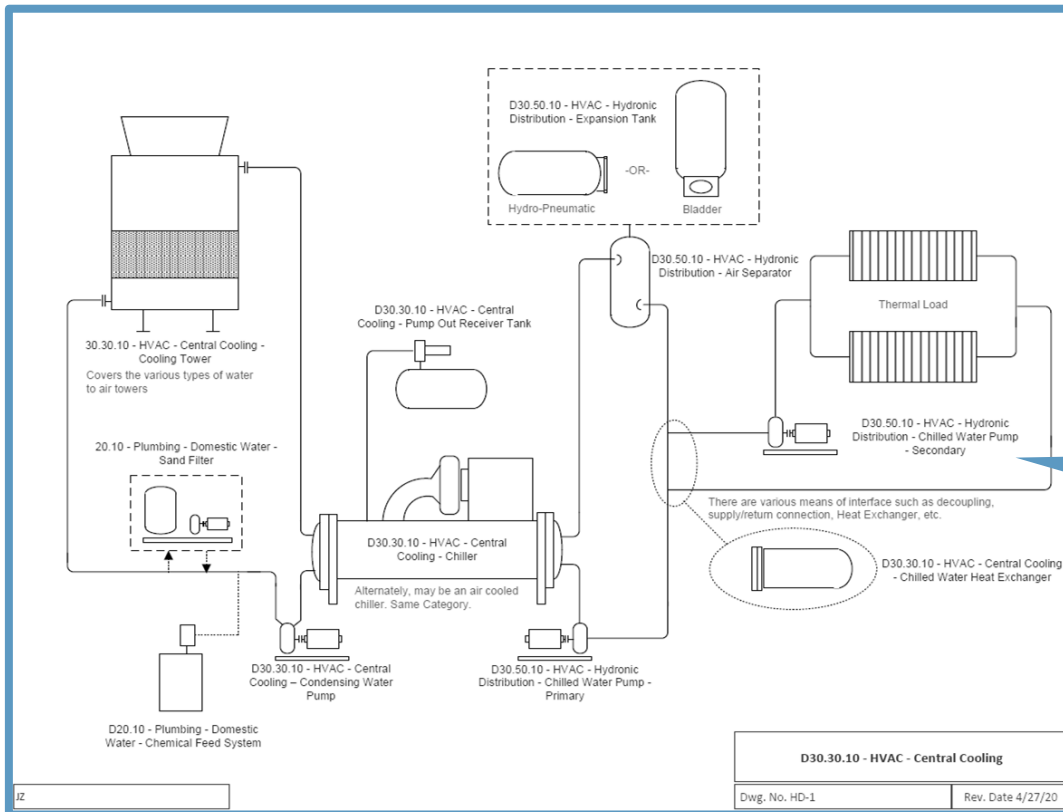
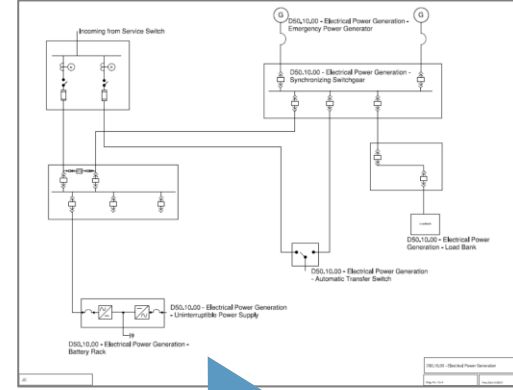
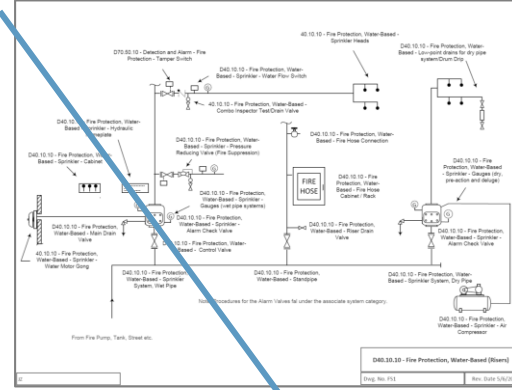
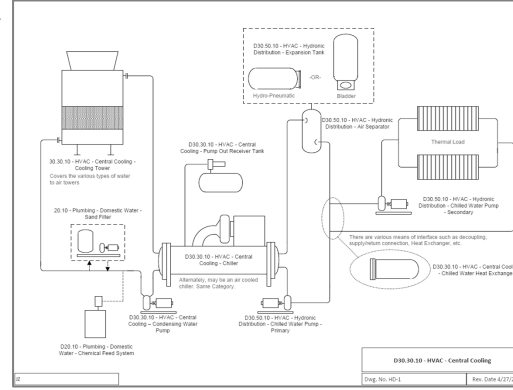
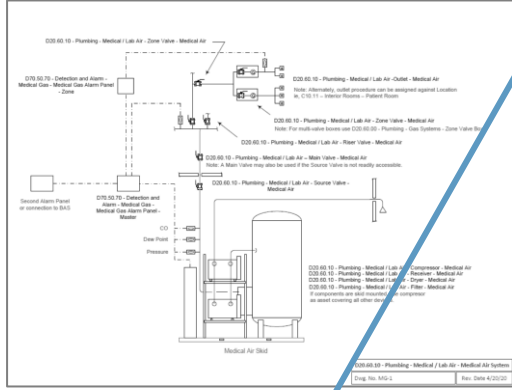
Department or Other Functional Area	FGI Reference
Building Support Engineering and Maintenance Services	2.1-5.6
Building Support Environmental Services	2.1-5.5
Building Support Materials Management	2.1-5.3
Building Support Waste Management	2.1-5.4
Clinical Service Laboratory Services	2.1-4.1
Clinical Service Pharmacy Services	2.1-4.2
Clinical Support Linen Services	2.1-5.2
Clinical Support Morgue Services	2.1-5.7
Clinical Support Sterile Processing	2.1-5.1
D&T Electroconvulsive Therapy	2.5-3.4
D&T Emergency Services	2.2-3.1
D&T Endoscopy Services	2.2-3.11
D&T Hyperbaric Suite	2.2-3.13
D&T Imaging Services	2.2-3.4
D&T Infusion Therapy	2.2-3.12
D&T Intensive Outpatient and Partial Hospitalization Program	2.2-3.14 (2022 Guidelines)
D&T Observation Unit	2.2-3.2
D&T Pre- and Post-Procedure Patient Care Areas	2.1-3.4
D&T Radiation Therapy	2.2-3.5
D&T Rehabilitation Therapy	2.6-3.1
D&T Renal Dialysis Services	2.2-3.10
D&T Respiratory Therapy	2.2-3.9
D&T Surgical Services	2.2-3.3
D&T Telemedicine Services	2.1-3.3
Food and Nutrition Services	2.1-4.3
Patient Care Alzheimer's and Other Dementia Patient Care Unit	2.5-2.4
Patient Care Bariatric Patient Care Unit	2.2-2.14
Patient Care Behavioral and Mental Health Patient Care Unit – Forensic	2.5-2.5
Patient Care Behavioral and Mental Health Patient Care Unit – General	2.5-2.2
Patient Care Behavioral Health Crisis Unit	2.2-2.17 (2022 Guidelines)
Patient Care Burn Trauma Intensive Care Unit	2.2-2.16 (2022 Guidelines)
Patient Care Critical Access Patient Care Unit	2.4-2.2
Patient Care Hospice Patient Care Unit	2.2-2.15
Patient Care In-Hospital Skilled Nursing Patient Care Unit	2.2-2.13
Patient Care Intensive Care Unit	2.2-2.6
Patient Care Intermediate Care Unit	2.2-2.5
Patient Care Medical/Surgical Patient Care Unit	2.2-2.2
Patient Care Neonatal Intensive Care Unit	2.2-2.8
Patient Care Nursery Unit	2.2-2.10
Patient Care Obstetrical Unit	2.2-2.9
Patient Care Oncology Patient Care Unit	2.2-2.3
Patient Care Patient Living Areas	2.6-2.3
Patient Care Pediatric and Adolescent Oncology Patient Care Unit	2.2-2.4
Patient Care Pediatric and Adolescent Patient Care Unit	2.2-2.11
Patient Care Pediatric Behavioral and Mental Health Patient Care Unit	2.5-2.3
Patient Care Pediatric Intensive Care Unit	2.2-2.7
Patient Care Pediatric Medical/Surgical Patient Care Unit	2.7-2.2
Patient Care Rehabilitation Patient Care Unit	2.6-2.2
Public and Administrative Areas Administrative Areas	2.1-6.3
Public and Administrative Areas Public Areas	2.1-6.2
Public and Administrative Areas Structured Parking	Not covered in FGI
Public and Administrative Areas Surface Parking	Not covered in FGI

Classification of Spaces

Grouping	Space Name	Abbreviation	2018 FGI Hospital Reference	Comments	ASHRAE 170 Addendum P
Clinical Service	Laboratory Analysis and Manual Processing	LAB-PRCS	2.1-4.1.2.1	"Laboratory workstations" in FGI (includes bacteriology, biochemistry, cytology, general, histology, microbiology, pathology, serology labs)	Laboratory work area
Clinical Service	Laboratory glasswashing	LAB-WASH	Not covered in FGI	Not covered explicitly in FGI but individually called out in ASHRAE 170	Laboratory work area, glasswashing
Clinical Service	Laboratory media transfer	LAB-MED-XFR	Not covered in FGI	Not covered explicitly in FGI but individually called out in ASHRAE 170	Laboratory work area, media transfer
Clinical Service	Laboratory Refrigerated Storage	STRG-LAB-REF	2.1-4.1.2.3		
Clinical Service	Laboratory Specimen Collection Facilities	LAB-COLL	2.1-4.1.3		
Clinical Service	Laboratory Storage	STRG-LAB	2.1-4.1.2.4		
Clinical Service	Laboratory Terminal Sterilization	LAB-STRL	2.1-4.1.2.6		Laboratory work area, sterilizing
Clinical Service	Pharmacy Dispensing Area	PHARM-DISP	2.1-4.2.2.1		Pharmacy services: pharmacy areas
Clinical Service	Pharmacy Hazardous Drug Compounding Room	PHARM-COMP-HAZ	2.1-4.2.2.2		
Clinical Service	Pharmacy Hazardous Drug IV Preparation Room	PHARM-IV-HAZ	2.1-4.2.3.3		
Clinical Service	Pharmacy IV Preparation Area	PHARM-IV	2.1-4.2.3.2		
Clinical Service	Pharmacy Non-Hazardous Drug Compounding Room	PHARM-COMP	2.1-4.2.2.2		
Clinical Service	Pharmacy Sterile Work Area	PHARM-STRL	2.1-4.2.3		Pharmacy services: pharmacy areas
Clinical Service	Pharmacy Storage	STRG-PHARM	2.1-4.2.2.3		Pharmacy services: pharmacy areas
Clinical Service	Radiopharmaceutical Production Pharmacy	PHARM-HOT	2.2-3.4.8.21		
Clinical Service	Support Areas for the Laboratory	LAB-SUPT	2.1-4.1.8		
Clinical Support	Admissions Area	ADMIT	2.1-6.3.1		
Clinical Support	Anesthesia Workroom	ANES-WRK	2.2-3.3.3		
Clinical Support	Anteroom	ANTE	2.1-2.4.2.3	FGI reference is for All anterooms	
Clinical Support	Autopsy Room	AUTOPSY	2.1-5.7.2.2		Autopsy room
Clinical Support	Body-Holding Area, Refrigerated	BODY-HOLD-REF	2.1-5.7.2.1		
Clinical Support	Body-Holding Room, Non-Refrigerated	BODY-HOLD	2.1-5.7.3		Non-refrigerated body-holding room
Clinical Support	Central Storage Clean Linen	STRG-LINEN-CTR	2.1-5.2.2.1 (3)	General support area, also see 2.8.13.1	Clean linen storage room
Clinical Support	Chute Access - Soiled Linen	CHUTE-LINEN	2.1-5.2.2.1 (1)(b)	Linen and trash chute room, see also 2.1-5.4.1.4	Linen and refuse chute room

Aligned with the FGI "Guidelines for Design and Construction of Hospitals"

Building Systems and Assets



One-line drawings are being developed for each building system

Asset Categories are shown on the one-line diagram

Building Systems

This classification is designed to itemize building infrastructure into functional elements

to support activities such as risk management, capacity planning, condition assessments.

Aligned with

- CSI Unifomat 2010
- Healthcare FM regulations or references (CMS, NFPA, FGI)
- Accreditation agencies such as TJC

UniFormat Ref.	Functional Element or Building System	Reference One-Line Drawing (See Tab 6)
A10	A. Substructure - Foundation - (System) Foundation	Not on schematic
B10	B. Shell - Superstructure - (System) Building	Not on schematic
B10	B. Shell - Superstructure - (System) Parking Structure	Not on schematic
B20	B. Shell - Vertical Enclosures - (System) Façades and Windows	Not on schematic
B30	B. Shell - Roof - (System) Roof	Not on schematic
C1010	C. Interiors - Barrier Walls - (System) Barrier Walls	C10-1 Barrier Walls
C1030	C. Interiors - Doors - (System) Doors	Not on schematic
C10a	C. Interiors - Rooms - (System) Room without Env. Controls	Not on schematic
C10b	C. Interiors - Rooms with Env. Controls - (System) Rooms with Env. Controls	Not on schematic
D1010	D. Services - Conveying - Vertical Transportation - (System) Elevators	Not on schematic
D1050.40	D. Services - Conveying - Material Handling - (System) Conveyor	Not on schematic
D1050.60	D. Services - Conveying - Material Handling - (System) Linen Chute	D10-2 Chutes
D1050.60	D. Services - Conveying - Material Handling - (System) Trash Chute	D10-2 Chutes
D1050.70	D. Services - Conveying - Material Handling - (System) Pneumatic Tube	D10-1 Pneumatic Tube System
D1080.50	D. Services - Conveying - Operable Access Systems - (System) Window Cleaning	Not on schematic
D2010	D. Services - Plumbing - Domestic Water - (System) Domestic Hot Water	D20-1 Domestic Water
D2010	D. Services - Plumbing - Domestic Water - (System) Domestic Water	D20-1 Domestic Water
D2010.20	D. Services - Plumbing - Domestic Water - (System) Water Treatment and Filtration	Not on schematic
D2020	D. Services - Plumbing - Sanitary Drainage - (System) Sanitary Drainage	Not on schematic
D2050	D. Services - Plumbing - Control Air - (System) Control Air	Not on schematic
D2060.10a	D. Services - Plumbing - Lab Air - (System) Laboratory Air	D20-2 Lab Air
D2060.10b	D. Services - Plumbing - Medical Air - (System) Medical Air	D20-3 Medical Air
D2060.20a	D. Services - Plumbing - Lab Vacuum - (System) Laboratory Vacuum	D20-4 Medical-Lab Vacuum
D2060.20b	D. Services - Plumbing - Medical Vacuum - (System) Medical Vacuum	D20-4 Medical-Lab Vacuum
D2060.20c	D. Services - Plumbing - WAGD Vacuum - (System) Waste Anesthesia Gas Disposal	D20-5 WAGD Vacuum
D2060.30a	D. Services - Plumbing - Oxygen Gas - (System) Oxygen Gas	D20-6 Medical Gas Oxygen
D2060.30b	D. Services - Plumbing - Nitrogen Gas - (System) Nitrogen Gas	D20-7 Medical Gas Nitrogen
D2060.30c	D. Services - Plumbing - Nitrous Oxide Gas - (System) Nitrous Oxide Gas	D20-8 Medical Gas Nitrous Oxide
D2060.30d	D. Services - Plumbing - Carbon Dioxide Gas - (System) Carbon Dioxide Gas	D20-9 Medical Gas Carbon Dioxide
D2060.40	D. Services - Plumbing - Chemical-Waste Systems - (System) Chemical Waste	Not on schematic
D2060.50	D. Services - Plumbing - Processed Water - (System) Water Purification - Deionized Water (DI)	Not on schematic
D2060.50	D. Services - Plumbing - Processed Water - (System) Water Purification - Reverse Osmosis (RO)	Not on schematic
D2060.90	D. Services - Plumbing - Heat Trace System - (System) Heat Trace	Not on schematic
D3020.10	D. Services - HVAC - Central Heating - (System) Central Heating	D30-1 Steam Heating and Distribution D30-2 Hydronic Central Heating
D3020.70	D. Services - HVAC - Decentralized Heating - (System) Decentralized Heating	D30-3a Hydronic Central Cooling D30-3b Air Cooled Chiller
D3030.10	D. Services - HVAC - Central Cooling - (System) Central Cooling	Not on schematic
D3030.70	D. Services - HVAC - Decentralized Cooling - (System) Decentralized Cooling	Not on schematic
D3030.70	D. Services - HVAC - Decentralized Cooling - (System) Split Type	Not on schematic
D3050.10	D. Services - HVAC - Hydronic Distribution - (System) Hydronic Distribution	D30-2 Hydronic Central Heating D30-3 Hydronic Central Cooling
D3050.30	D. Services - HVAC - Steam Distribution - (System) Steam Distribution	D30-1 Steam Heating and Distribution
D3050.50	D. Services - HVAC - Air Handling - (System) Air Distribution	D30-5 HVAC Air Handling
D3060.30	D. Services - HVAC - Ventilation - Exhaust Air - (System) Exhaust Air	Not on schematic

Assets

The classification system groups activities such as preventive maintenance, regulatory monitoring and cost allocation to be aligned with the organizations assets.

Assets in this context are defined as tangible resources (building, system, equipment) that requires documented inspections, testing and maintenance.

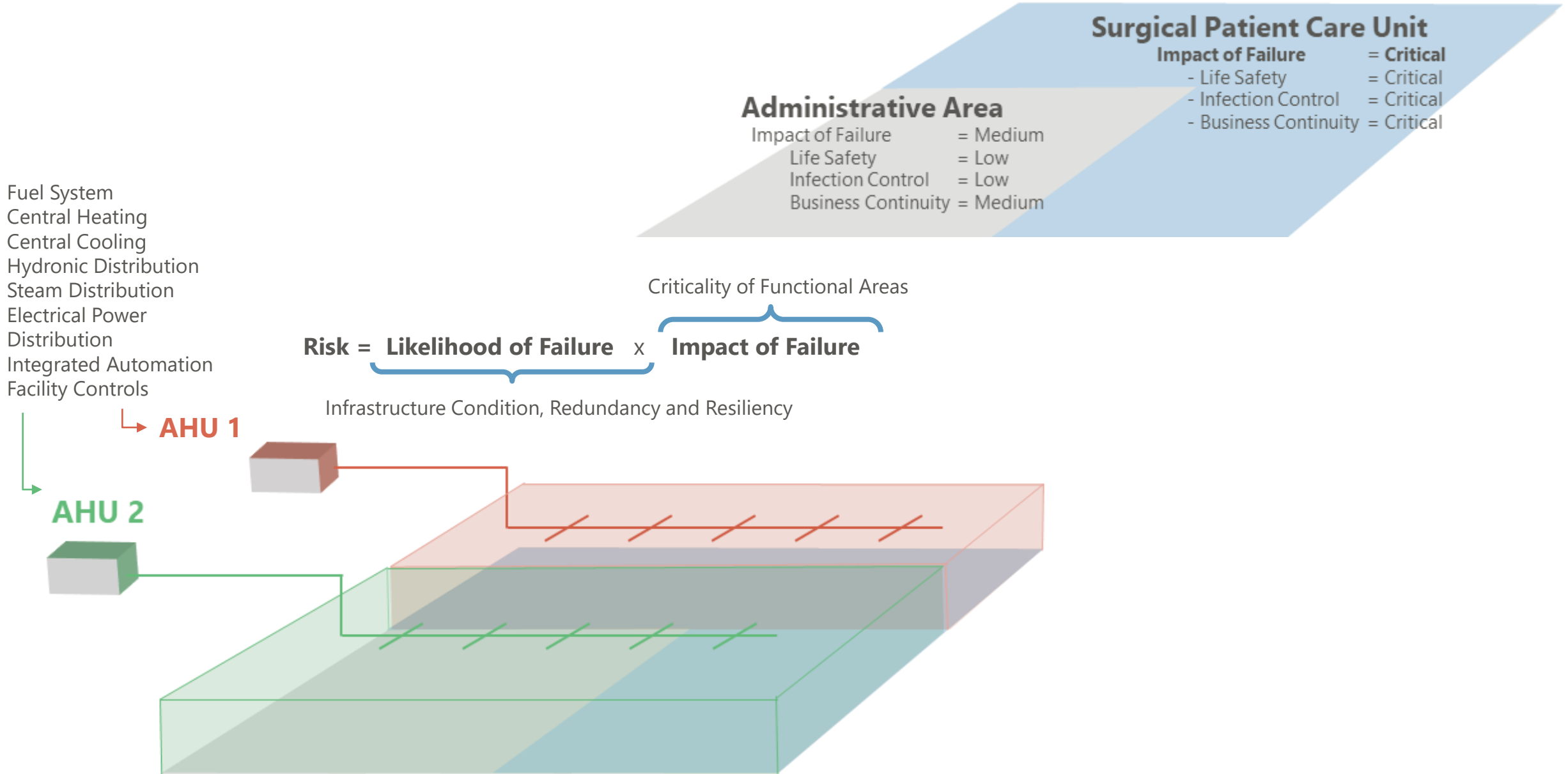
Aligned with

- CSI Uniformat 2010
- Healthcare FM regulations or references (CMS, NFPA, FGI)
- Accreditation agencies such as TJC

Type	CSI Uniformat 2010	Reference to Schematics on Tab 6	ASHE Asset Categories (Plain Language)	What is the asset?	How is it identified?	Asset Definition
Grouping	D2010		D. Plumbing - Domestic Water			General Category
System	D2010	Not on One-Line	D. Plumbing - Domestic Water - (System) Domestic Hot Water	Each loop	No barcode - Track by location	Generic representation of all branches with domestic hot water loops.
System	D2010	Not on One-Line	D. Plumbing - Domestic Water - (System) Domestic Water	Each system or system branch	No barcode - Track by location	Generic representation of all cold domestic water system.
System	D2010	Not on One-Line	D. Plumbing - Domestic Water - (System) Water Treatment and Filtration	Each system	On control panel	System that typically involves injection of bulk chemicals into a raw water process in order to bring it to some required quality specification and/or mechanical filtration.
Asset	D2010.10	Not on One-Line	D. Plumbing - Domestic Water - Break Tank	Each tank	On control panel	A non-pressurized, closed water tank with an air gap to ensure zero backflow. It interrupts or 'breaks' the connection to the water source.
Asset	D2010.10	D20-1	D. Plumbing - Domestic Water - Domestic Hot Water Storage Tank	Each tank to be barcoded	On control panel	A device who's stole purpose is to store domestic hot water between 105F and 140F. Water is produced by a separate heat exchanger or other means. Tank normally sized to address demand use. An inventory of these devices can support ASHRAE 188.
Asset	D2010.10	D20-1	D. Plumbing - Domestic Water - Domestic Water Pump	Each pump set (not each pump)	On control panel	This is a pump that takes city water and pumps it up to a house tank. Normally used in building more they 5 stories high as city water pressure cannot provide adequate pressure to get the water to the upper floors.
Asset	D2010.10	D20-1	D. Plumbing - Domestic Water - House Tank	Each unit	On control panel, if no control panel on dunnage under tank	A tank used to maintain pressure in the domestic water and/or fire protection systems and is generally installed at the top of a high rise building. Tank is serviced by a house pump that boosts the city water pressure so it can reach high enough to fill the house tank.
Asset	D2010.10	Not on One-Line	D. Plumbing - Domestic Water - Potable Water Storage Tank	Each unit	On control panel	Domestic Water Storage tank, typically at an upper floor level.
Asset	D2010.10	D20-1	D. Plumbing - Domestic Water - Surge Tank	Each tank	On control panel	Tank intended to neutralize sudden changes of pressure in the flow by filling when the pressure increases and emptying when it drops.
Asset	D2010.20	Not on One-Line	D. Plumbing - Domestic Water - Dialysis Hookup	Each unit	On inlet side of pipe directly or with chain and tag before the assembly.	A connection the domestic system that provides water at a specific temperature and usually at a specified pressure.
Asset	D2010.20	D20-1	D. Plumbing - Domestic Water - Domestic Hot Water Boiler	Each unit	On control panel, if no control panel on clean space next to boiler "name"	A device that indirectly produces domestic hot water
Asset	D2010.20	D20-1	D. Plumbing - Domestic Water - Domestic Hot Water Boiler - Electric	Each unit	On control panel, if no control panel on clean space next to boiler "name"	A device that indirectly produces domestic hot water by using electrical energy.
Asset	D2010.20	D20-1	D. Plumbing - Domestic Water - Domestic Hot Water Boiler - Gas	Each unit	On control panel, if no control panel on clean space next to boiler "name"	A device that indirectly produces domestic hot water by using natural gas or propane.
Asset	D2010.20	D20-1	D. Plumbing - Domestic Water - Domestic Hot Water Boiler - Oil	Each unit	On control panel, if no control panel on clean space next to boiler "name"	A device that indirectly produces domestic hot water by using oil.
Asset	D2010.20	D20-1	D. Plumbing - Domestic Water - Domestic Hot Water Circulating Pump	Pump at heater should be its own	On control panel	A pump that circulates domestic hot water from the furthest point of distribution to the source in order to maintain the proper discharge temperature and prevent the spread of legionella.

- The schema lists 640 categories of assets that are typically maintained by the engineering team of a healthcare organization.
- Each category is defined, and has references to Uniformat 2010, OmniClass Table 21 and where applicable to regulatory codes and standards.
- The Construction Specification Institute licensed the use of Uniformat 2010 © for this classification schema.

Putting the Standards to Work: An Example in Risk Management





Get involved!

To get involved, contact Matthias Ebinger (mebinger@ensto.com) or Frank Rudilosso (frr9035@nyp.org).